

KVL-00 3p M8-M8



Specifications

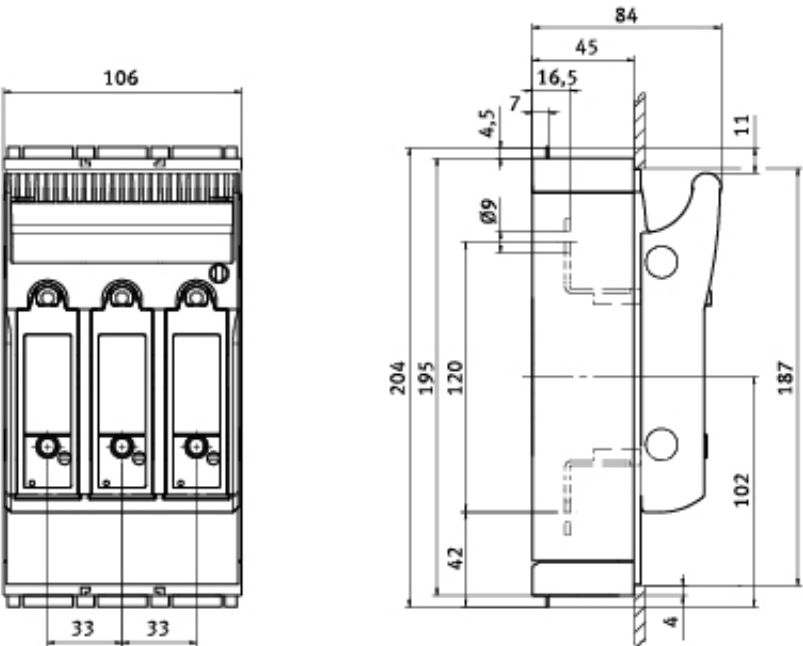
ETI Code	001690870
Description	KVL-00 3p M8-M8
Class name	Fuse switch disconnecter
Rated current (A)	160
Type	KVL
Size	NH00
Number of poles	3
Product group	Horizontal fuse-switch disconnecter
Rated AC voltage (V)	690
Utilization category	AC-23B / DC-22B
Connection	M8
Rated DC voltage (V)	440
Mounting	Screw-on

Online product page 

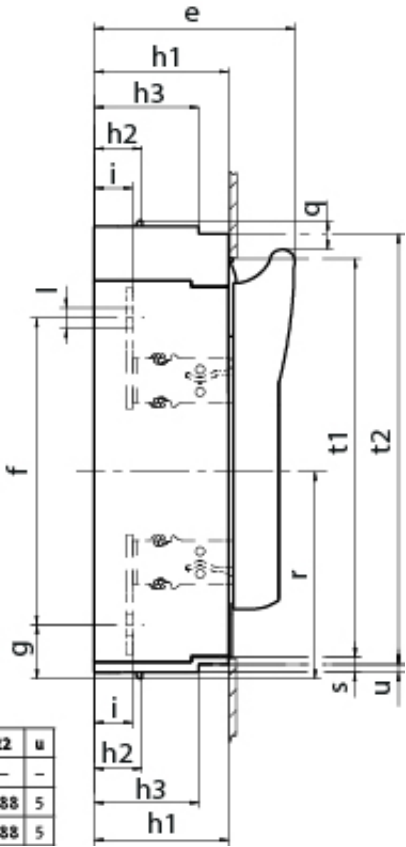
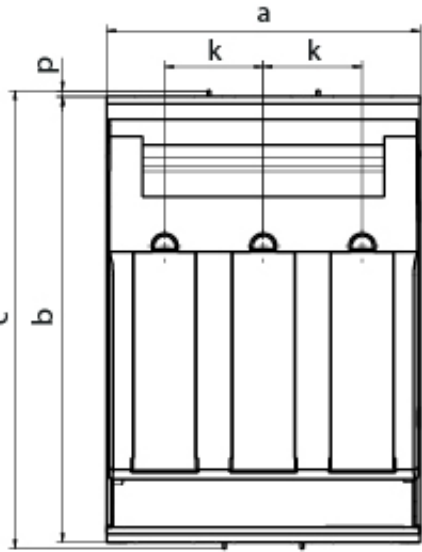
ETIM international clasification

Classification	EC001040
Class name	Fuse switch disconnecter
Version as main switch	1
Version as safety switch	1
Rated permanent current Iu	160A
Suitable for fuses	NH00
Number of poles	3
With error protection	
Type of electrical connection of main circuit	Screw connection
Suitable for floor mounting	1
Type of control element	Cover grip

Dimension drawing



KVL-00 3p M8-M8
KVL-00 3p BC95-BC95
KVL-00 3p M8-M8 LED
KVL-00 3p BC95-BC95 LED



	a	b	c	e	f	g	h1	h2	h3	i	k	l	p	q	r	s	t1	t2	u
KVL-1 3p M10-M10 (LED)	184	298	306	117	185	46	70	32	-	25	58	Ø10,5	4	19	138	5	272	-	-
KVL-2 3p M10-M10 (LED)	210	298	306	134	205	36	90	32	70	26	66	Ø14	4	19	138	10	268	288	5
KVL-3 3p M10-M10 (LED)	250	298	306	143	205	36	90	32	70	26	82	Ø14	4	19	138	10	268	288	5